



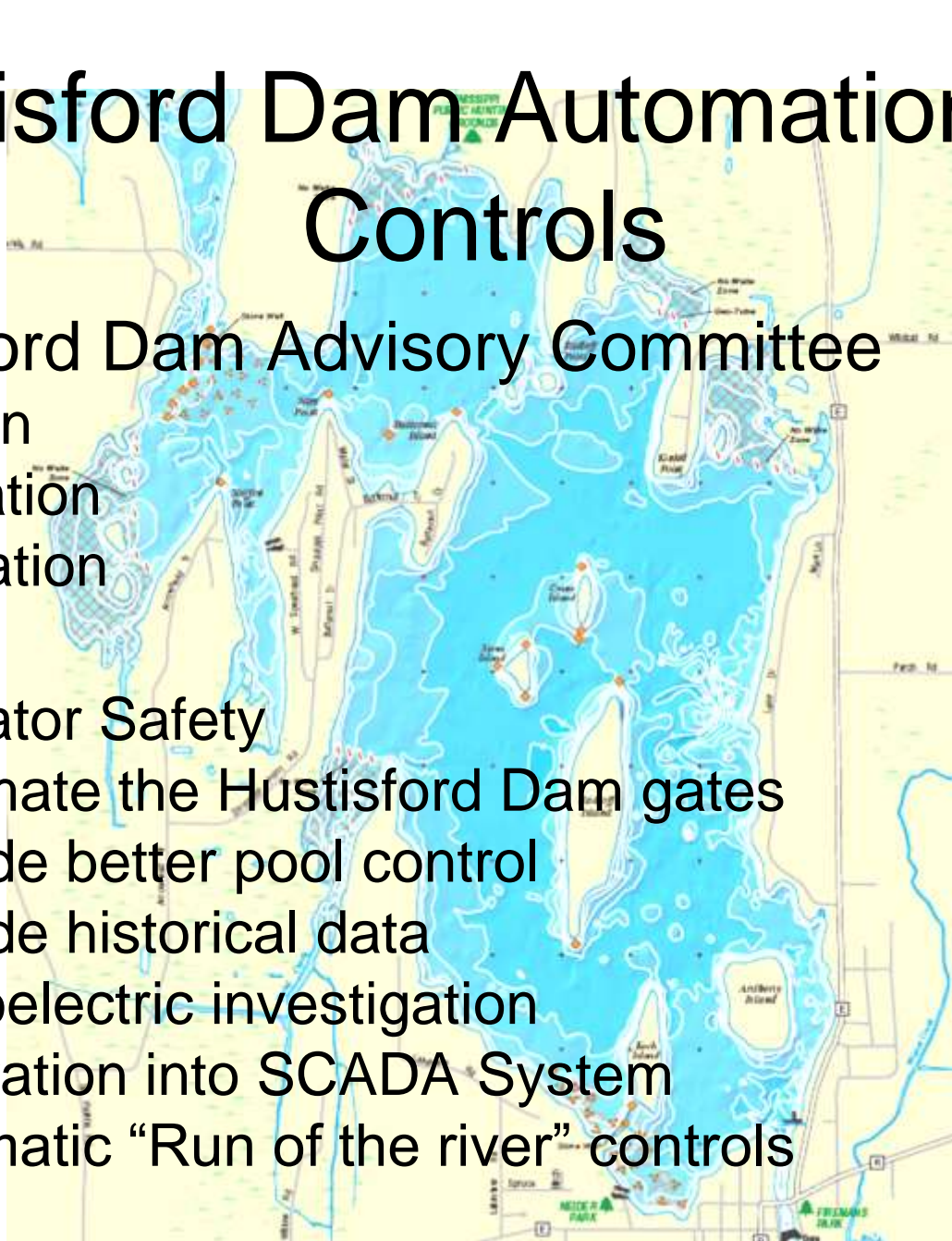
The Hustisford Dam Advisory Committee

Informational Presentation on the Hustisford Dam automation



Hustisford Dam Automation and Controls

- Hustisford Dam Advisory Committee
 - Design
 - Insulation
 - Operation
- Goals
 - Operator Safety
 - Automate the Hustisford Dam gates
 - Provide better pool control
 - Provide historical data
 - Hydroelectric investigation
 - Integration into SCADA System
 - Automatic “Run of the river” controls



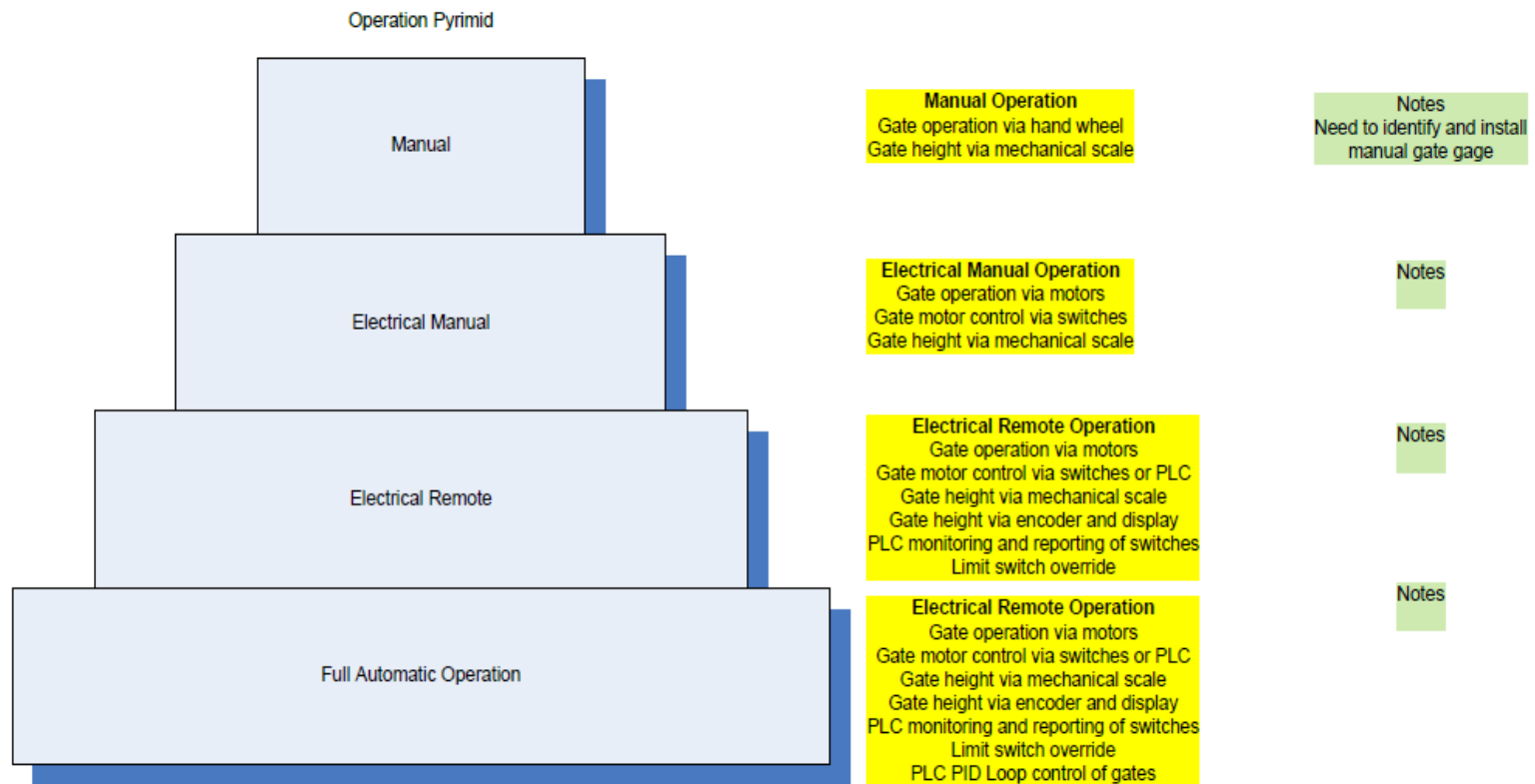
Plans

A map of the Mississippi River area, showing water level monitors and future infrastructure. The map is overlaid with a blue color scheme representing water levels. Key features include the Mississippi River, various islands (e.g., Antlers Island, Ruby Island), and surrounding land areas. The map is titled 'Plans' and lists several projects and monitors.

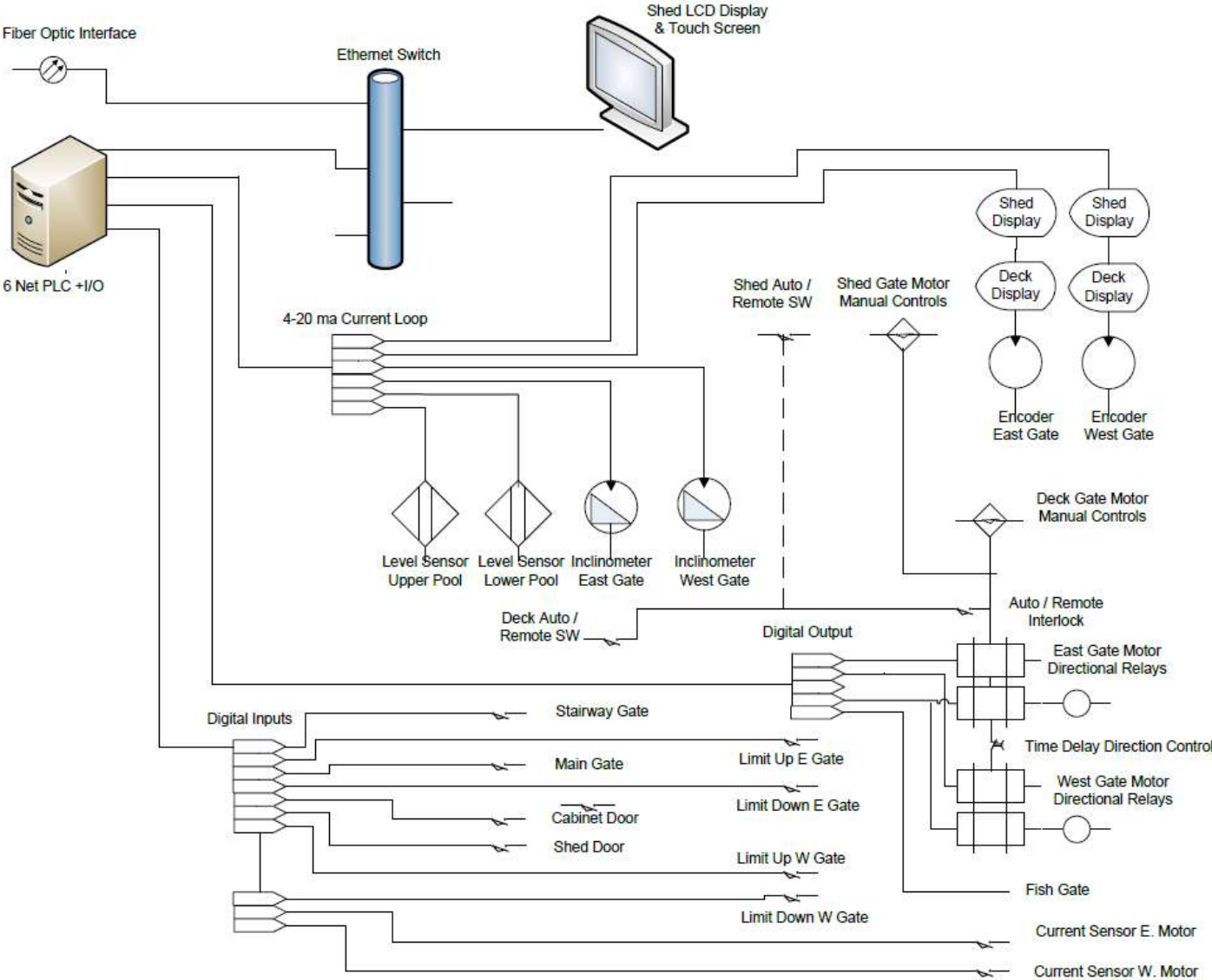
- Automatic reporting water level monitors
 - Hustisford upper and lower pools (Complete)
 - Horicon Dam lower pool (Future)
 - OX-BO Channel (Future)
 - Hwy 60 bridge (Future)
 - Hwy MM (Future)
- Automatic notification system
- Hydroelectric feasibility
- Full automatic “Run of the river” controls

Overview of control structure

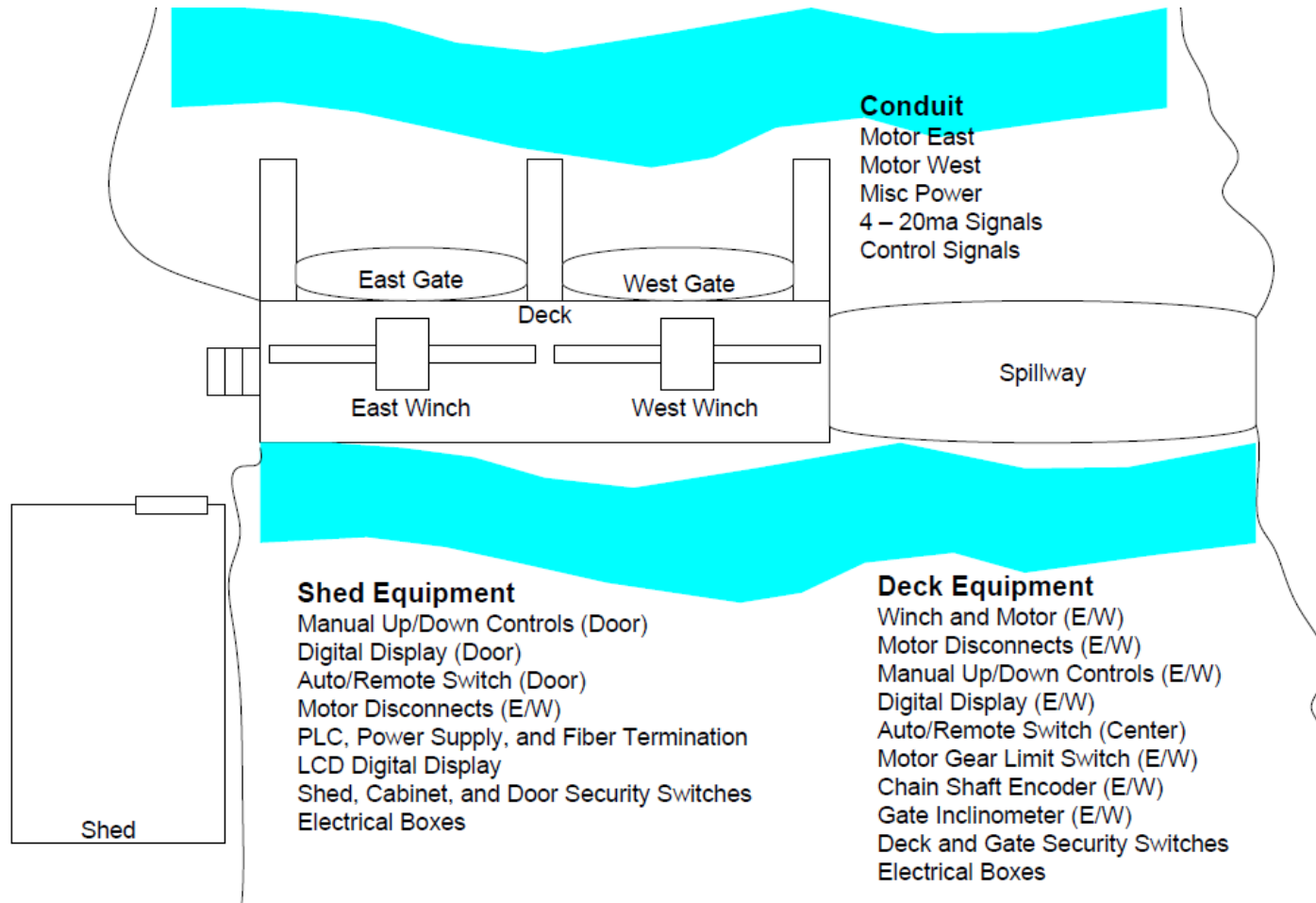
Hustisford Dam Gate Operation Levels of operation and implementation



Schematic of control hardware



Placement of controls hardware



Contact Information

A map of a large reservoir, likely the Hustisford Dam Reservoir, showing various islands and surrounding areas. The map is overlaid with a semi-transparent text box containing contact information. The map features several islands, including 'Hustisford Island' and 'Antlers Island'. There are also labels for 'MISSISSIPPI PUBLIC HUNTING GROUNDS' and 'MEXICO PARK'. The map shows roads, water bodies, and various landmarks.

- Hustisford Dam Advisory Committee
 - Meetings third Tuesday each month
 - Agendas are posted
- Automation contacts
 - Gary Knipper
 - Louis Linsmeyer
 - Todd Tessmann
- Copy of Presentation
 - Email gary.knipper@charter.net